



The New Brunswick Association of Social Workers'
New Member Handbook

March 2024

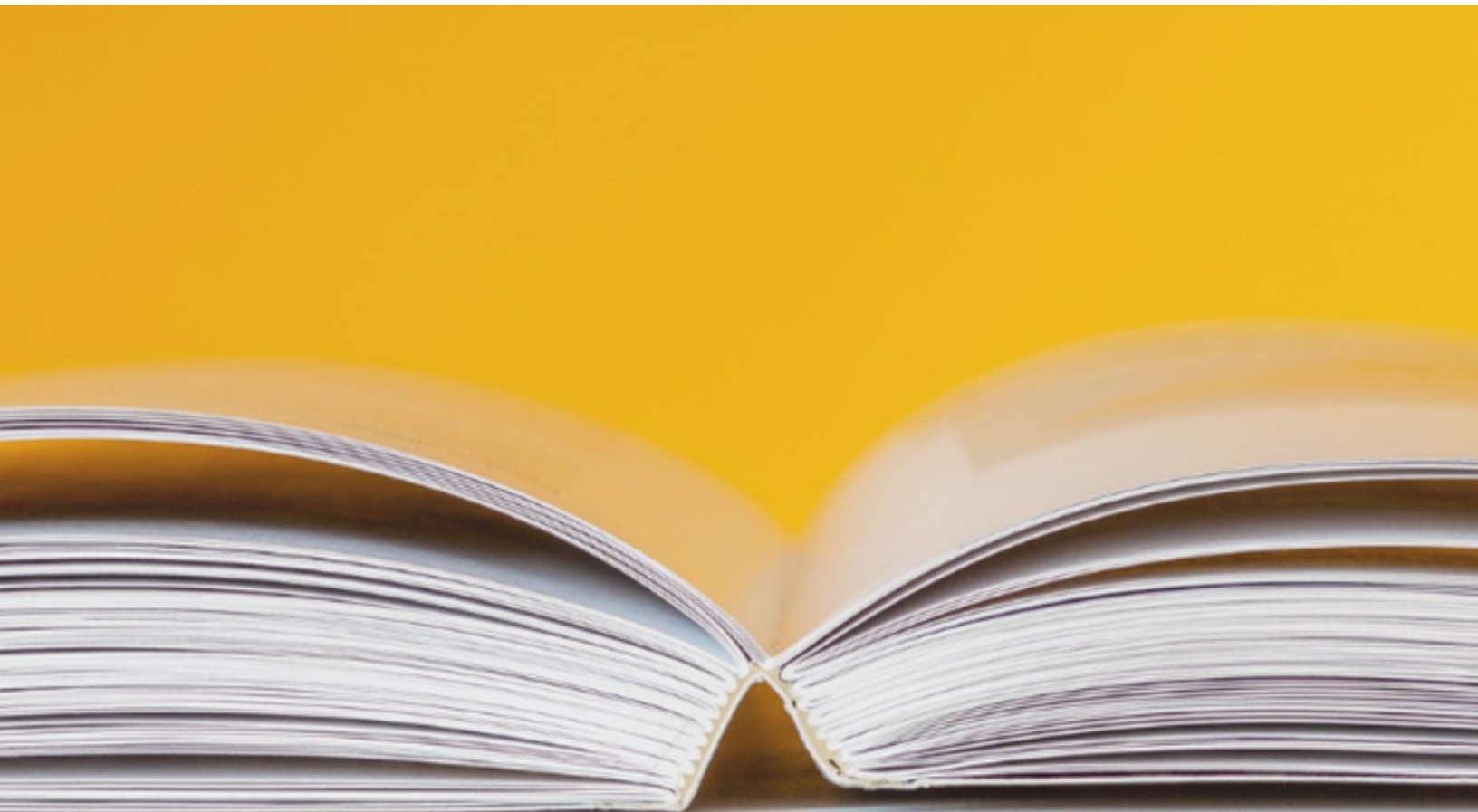


Table of Contents

Welcome to the NBASW	3
Who is the NBASW?	3
Our Vision.....	3
Our Mission	3
Our Values.....	3
Strategic Plan	4
Categories of Membership	4
Social Work Practicing Membership.....	4
Social Work Technician Practicing Membership	5
Non-Practicing Social Work Membership	5
Non-Practicing Social Work Technician Membership.....	5
Temporary Authorized Social Worker	6
Temporary Authorized Social Work Technician	6
Student Membership.....	7
Honorary Membership	7
Member Benefits and Resources	7
Right to practice	7
Ethical Consultation Services	7
Memberships	8
Access to Free & Discounted Continuing Education	8
Accomplishments and Awards	9
Bursaries and Grants	9
Annual General Meeting (AGM), Conference, and Banquet	9
Local Chapters	9
Member Feedback.....	10
Committee Involvement.....	10
Home and Auto Insurance Discount.....	10
UNI Offers	11
Employment opportunities.....	11
Email Updates	11
Social Media	11

National Social Work Month 11

Member Accountability 12

 Renewal 12

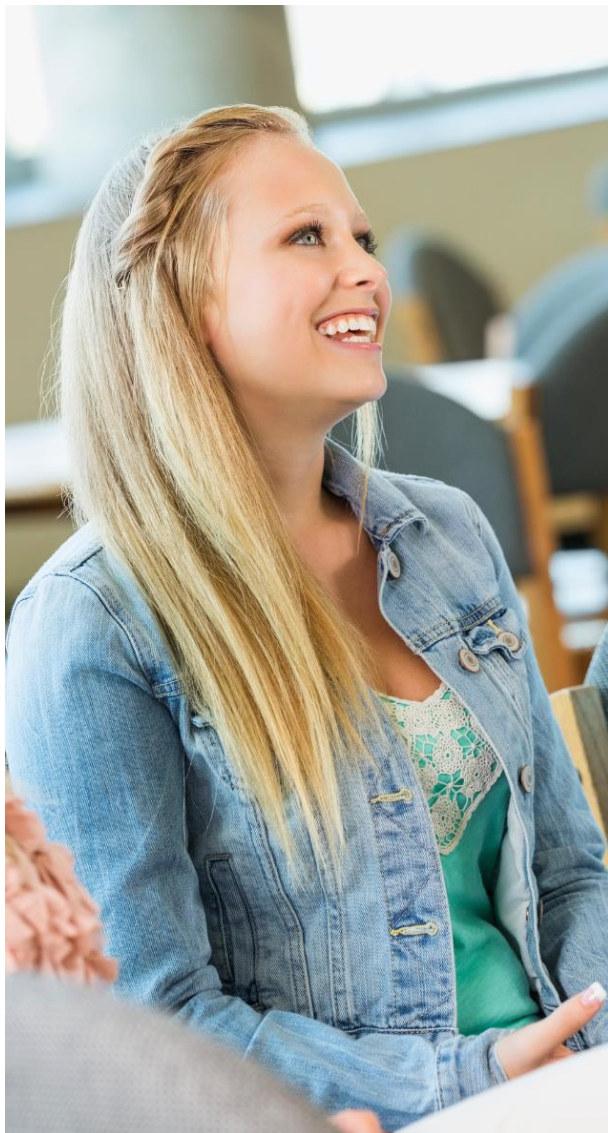
 Code of Ethics..... 12

 Standards of Practice 13

 Guidelines 13

 Complaints 13

Contact Us 14



Welcome to the NBASW

Who is the NBASW?

Welcome to the New Brunswick Association of Social Workers (NBASW)!

The NBASW is an organization representing more than 2,300 social workers & social work technicians in New Brunswick. The Association was established in 1965 as a voluntary Association and became a regulatory body in 1988.

Our Vision

The NBASW envisions a professional organization that reflects the values of social work, provides ethical leadership, and instills public confidence.

Our Mission

The NBASW is an association that protects the public and promotes excellence in social work practice.

Our Values

- Respect for the inherent dignity and worth of persons
- The pursuit of social justice and equity, diversity, and inclusion
- Integrity in professional practice
- Confidentiality in professional practice
- Competence in professional practice

The NBASW's regulatory authority is legislated by the [New Brunswick Association of Social Workers Act](#) and, subsequently, the [NBASW Bylaws](#).

The NBASW is governed by a Board of Directors, which is composed of an Executive, regional representatives from around the province, two First Nations representatives (Mi'gmaq and Wolastoquiyik First Nations Representatives), a public representative, and a national representative (Canadian Association of Social Workers).

Strategic Plan

As the social work regulator and the voice of the social work profession & paraprofession in New Brunswick, the Association strives to advance the interests of the profession by setting goals and objectives set out in a [5-year Strategic Plan](#) that guides the Association's long-term objectives. The current pillars of the plan are:

1. Protection of the Public
2. Member Engagement
3. Promotion of the Profession
4. Governance and Resources

Categories of Membership

The membership category under which you fall may change over the course of your career and may change how you access and participate in certain events, and what information you will need to provide upon your annual membership renewal.

The Association's categories of membership are:

- Social Work Practicing Membership
- Social Work Technician Practicing Membership
- Social Work Non-Practicing Membership
- Social Work Technician Non-Practicing Membership
- Temporary Authorized Social Worker
- Temporary Authorized Social Work Technician
- Student Membership
- Honorary Membership

Social Work Practicing Membership

According to the [NBASW Scopes of Practice](#), *"Practice of social work" means the assessment, diagnosis and prevention of social problems, and the enhancement and rehabilitation of social functioning of individuals, families, groups and communities.*

Practicing social workers are those who are entitled to work within the scope of practice of social work and represent themselves as Registered Social Workers (RSW).

Practicing social workers are entitled to attend and vote at the Annual General Meeting and Special Meetings of the Association, to be elected as a member of the Board of Directors and to serve on Committees of the Board.

Social Work Technician Practicing Membership

According to the [NBASW Scopes of Practice](#) *“Practice as a social work technician” means the paraprofessional support to the assessment, prevention of social problems, enhancement of social functioning, and the rehabilitation of individuals, families, groups, and communities.*

Practicing social work technicians are those who are entitled to work within the scope of practice of social work technicians and represent themselves as registered social work technicians (RSWT).

Practicing social work technicians are entitled to attend and vote at the Annual General Meeting and Special Meetings of the Association, to be elected as a member of the Board of Directors and to serve on Committees of the Board.

Non-Practicing Social Work Membership

Non-practicing social workers are those who meet all requirements of practicing members but are not entered in the Register and therefore are not entitled to work within the scope of practice of social work, with the exception of work provided to the NBASW (e.g. committee work) and are not entitled to represent themselves as Registered Social Workers. Non-practicing members may include but are not limited to those who are out of province, not employed, retired, on long-term disability, and/or on parental leave.

Non-practicing social workers are entitled to attend and vote at the Annual General Meeting and Special Meetings, to be elected to the Board, and to serve on Committees of the Board.

Non-Practicing Social Work Technician Membership

Non-practicing social work technicians are those who meet all requirements of practicing members but are not entered in the Register and therefore are not entitled to work within the scope of practice of social work technicians, with the exception of

work provided to the NBASW (e.g. committee work) and are not entitled to represent themselves as registered social work technicians.

Non-practicing members may include but are not limited to those who are out of province, not employed, retired, on long-term disability, and/or on parental leave.

Non-practicing social work technicians are entitled to attend and vote at the Annual General Meeting and Special Meetings, to be elected to the Board, and to serve on committees of the Board.

Temporary Authorized Social Worker

Temporary authorized social workers are those entered in the Register as a registered social worker for a special purpose and limited time. This may include individuals who are registered social workers in good standing with at least one other regulatory body and who wish to practice social work in New Brunswick for a special purpose and for a limited time (e.g. a client is moving to New Brunswick and the social worker wants to continue providing services).

Temporary authorized social workers are entitled to attend the Annual General Meeting and Special Meetings of the Association as observers. They are also entitled to use the title of “registered social worker” for the limited period in which they are registered with the NBASW.

Temporary Authorized Social Work Technician

Temporary authorized social work technicians are those entered in the Register as a registered social work technician for a special purpose and limited time. This may include individuals who are similarly registered and in good standing with at least one other regulatory body and who wish to practice as a social work technician in New Brunswick for a special purpose and for a limited time (e.g. a client is moving to New Brunswick and the social work technician wants to continue providing services).

Temporary authorized social work technicians are entitled to attend the Annual General Meeting and Special Meetings of the Association as observers. They are also entitled to use the title of “registered social worker” for the limited period in which they are registered with the NBASW.

Student Membership

Student members are those enrolled in an accredited Bachelor of Social Work program, Master of Social Work program, or recognized Social Work Technician program. Student members are entitled to attend the Annual General Meeting and Special Meetings of the Association as observers and serve on Committees of the Board. Student members are not entitled to use the title of “social Worker”, “registered social worker”, “social work technician”, or “registered social work technician”. Student members are not entitled to practice within the scope of social work or the scope of social work technicians.

Honorary Membership

Honorary Members are persons deemed to have made some outstanding contribution to social work as confirmed by a unanimous vote by the Board.

Honorary Members are entitled to attend the Annual General Meeting and Special Meetings of the Association as observers.

Member Benefits and Resources

All resources and benefits are accessible on the NBASW website at www.nbasw-attsnb.ca.

Right to practice

As regulated professionals and paraprofessionals, registered practicing members of the NBASW may practice within their respective scope of practice.

Ethical Consultation Services

The NBASW Registrar can provide individual consultation to members regarding practice issues. Members can also submit questions in writing to the Registrar. Please contact our Registrar, Martine Paquet, at martine.paquet@nbasw-attsnb.ca to use this member service.

Memberships

The NBASW, as an organization, is a member of the:

- [Association of Social Work Boards](#) (ASWB)
- [Canadian Association of Social Workers](#) (CASW)
- [Canadian Council of Social Work Regulators](#) (CCSWR)
- [International Federation of Social Workers](#) (IFSW)

NBASW members automatically become CASW members when registering with us, allowing you to use the CASW's benefits, including free continuing education, various discounts, professional liability insurance and more.

[Create a new CASW account to access your benefits.](#)

Access to Free & Discounted Continuing Education

NBASW members can access various continuing education opportunities. The NBASW often partners with the CASW to offer free webinars, which are usually recorded and available to view after the original streaming date on the [CASW's webinars website page](#). These opportunities are presented to members via email, on our website's [news and events calendar](#), and on our [Facebook](#) and [X](#) (Twitter) pages.

For discounted training, visit:

- [Crisis and Trauma Research Institute](#) (CTRI)
Use discount code **NBASW15** at checkout for 15% off
- [ACHIEVE Centre for Leadership](#)
Use discount code **NBASW15** at checkout for 15% off
- [Learning Essential Approaches to Palliative Care \(LEAP\)](#)
Log in with your CASW account to use the 20% discount
- [Centre for Indegogy](#)
Log in with your CASW account to use the 10% discount
- [CASW Private Practice Portal](#) – Free
- [Canadian Social Work journal](#) – Free
- [Canadian Social Work Review journal](#) – Free

Accomplishments and Awards

The NBASW periodically awards exceptional members for their accomplishments in the social work field. [Visit our website](#) for eligibility criteria, application forms, deadlines, and more details regarding the following:

- Raoul Léger Memorial Award
- Debbie Nason Social Work in Health Care Award
- CASW Distinguished Service Award

Bursaries and Grants

The NBASW offers financial assistance to members for their education and continuing professional development. [Visit our website](#) for eligibility criteria, application forms, deadlines, and more details regarding the:

- CASW & NBASW Grant
- Co-operators Bursary for Members
- NBASW Bursary
- UNI Bursary for Student Members
- UNI Education Grant
- Professional Development Fund

Annual General Meeting (AGM), Conference, and Banquet

The Annual events are an opportunity for members from all NBASW Chapters to come together to vote on motions, get updates from the NBASW, hear chapters present their yearly achievements, present awards, and more.

The annual events take place between April 1st and June 30th at a place within New Brunswick as determined by the Board.

Local Chapters

Members residing in New Brunswick belong to one of the 11 NBASW chapters.

- [CLICK HERE](#) to see which NBASW Chapter you are a part of.

Each chapter represents a region of the province and has its own Executive, including a Chapter President, Vice-President, Secretary, Treasurer, and Chapter Director, who meet regularly.

The Chapters also host events that allow you to meet fellow social workers. If you would like to be involved in your local Chapter's activities, please [contact them](#) directly for details. Members are automatically added to their local Chapter's email list upon initial registration to receive news and updates on chapter events. Members can update which chapter they are part of when renewing their membership each year.

Member Feedback

When the Association drafts [new policies, standards of practice, and recommendations document](#), we request member feedback on these new or revised documents to ensure we have a comprehensive representation of member's outlooks. We encourage members to provide their valuable feedback and suggestions so the Association may compile them and make necessary changes to the documents.

NBASW also conducts regular satisfaction surveys for members to provide ongoing feedback about NBASW engagement, communications, and more!

Committee Involvement

If you want to participate in NBASW functions and be involved in decision-making processes, consider joining a committee. Terms are for a duration of two years and can be renewed for a second term. Each committee can have up to six members.

The NBASW has two types of Committees, regulatory and standing.

- Regulatory committees are responsible for the activities related to registration, complaints, and discipline of membership, as mandated by the Provincial Act.
- Ad Hoc committees are set up by the Board for a limited time to address a particular issue or interest. These committees vary.

[CLICK HERE](#) for more details and to apply to sit on a committee.

Home and Auto Insurance Discount

NBASW members receive discounted rates on home and auto insurance through Cooperators Group Insurance. For more information or to get a quote visit cooperatorsgroupinsurance.com or call 1-800-387-1963.

UNI Offers

This offer includes the social worker's package, mortgage financing, personal loans, lines of credit, financial planning services, and credit cards. Take advantage of this benefit by informing any UNI location that you are part of the social work professional offer. [CLICK HERE](#) to contact UNI and start using this member benefit.

Employment opportunities

Members can view New Brunswick social work and social work technician employment opportunities on our [employment listing's page](#). [Contact us](#) directly to add a listing.


Email Updates

As an NBASW member, you will receive email correspondence from us, including important memos, continuing education opportunities, regular newsletters, news releases, employment opportunities, and more. You are automatically signed up to receive emails when you register as a member.

Social Media

Stay connected with us on social media! You'll find posts about continuing education opportunities, contests, news stories, and more. Follow us on:

 [Facebook](#)

 x ([Twitter](#))

National Social Work Month

National Social Work Month is celebrated yearly in March to highlight the essential work and presence of social workers and social work technicians in our communities. Every year, we will communicate with members regarding the theme, which the CASW selects. The NBASW participates in a variety of activities, including hosting contests, presenting free webinars, giving out swag items, and more!

Member Accountability

Renewal

Practicing and non-practicing members shall renew their memberships every year, by March 31st to maintain their registration and to keep accessing member benefits. To maintain your NBASW membership, the Association requests that you

1. [Submit your online, updated renewal form](#), and
2. [Pay the annual membership dues](#).*

DID YOU KNOW?

***NBASW Pre-Authorized Debit Program**

The [Pre-Authorized Debit Program](#) is an optional payment method that allows renewing members the opportunity to pay their annual membership dues in six smaller monthly installments, rather than one lump sum. The program simplifies renewal every year, as the payment is automatically withdrawn from the member's account from September through February, leaving only the renewal form to complete by the March 31 deadline.

To renew, members must have completed a set number of continuing professional education hours throughout the registration year, to stay up to date on the latest research and best practices. Additionally, the yearly CPE requirements state that one NBASW [Ethics, Standards, and Guidelines Training](#) must be completed annually.

The [Continuing Professional Education Policy](#) outlines all requirements based on membership types. As a member, you are responsible for keeping track of your hours and identifying under which learning category they fall. The [CPE Journal](#) can be used to help keep track of your learning activities.

Code of Ethics

Anyone receiving social work services or the services of a social work technician, is entitled to be treated fairly and with respect, according to the values outlined in this the [NBASW Code of Ethics](#). NBASW members must abide by these values to ensure their ethical obligations are fulfilled.

Standards of Practice

Standards of Practice are the minimum requirements for a practicing member to execute their duties, as set out by NBASW. We encourage members to stay up to date on NBASW Standards of Practice, as this will affect your day-to-day practice. [CLICK HERE](#) to see all Standards of Practice.

Guidelines

Guidelines are recommendation documents released for practicing members to help them navigate their everyday practice. While practicing members are not obligated to abide by these documents, we encourage you to stay up to date on all Guidelines, as these will help to inform your everyday practice. [CLICK HERE](#) to see all NBASW Guidelines.

Complaints

Everyone receiving the services of registered social workers or social work technicians is entitled to be treated fairly, respectfully, and ethically. While most social workers and social work technicians in New Brunswick abide by these standards, occasionally, situations arise that result in a complaint against a social worker or social work technician.

Anyone may submit a complaint in writing against a social worker or a social work technician who is/was registered in New Brunswick. A complaint may refer to professional misconduct, incompetence and/or breach of the Code of Ethics. Social workers and social work technicians have an obligation to notify the Association when they believe or have reason to believe that a colleague who is a social worker is guilty of malpractice or professional misconduct. [CLICK HERE](#) to learn more about the complaints process.



Contact Us

Looking for a member of our staff? [See the staff directory.](#)

Website: www.nbasw-attsnb.ca

Email: info@nbasw-attsnb.ca

Tel: (506) 459-5595 or (506) 459-1203

Toll Free: 1-877-495-5595

Fax: (506) 457-1421

Mailing Address:

NBASW

P.O. Box 1533, Station A

Fredericton, NB E3B 5G2

Street Address:

NBASW

403 Regent Street, Suite 100

Fredericton, NB E3B 3X6

Business Hours:

Monday – Friday 8:30am - 4:30pm

